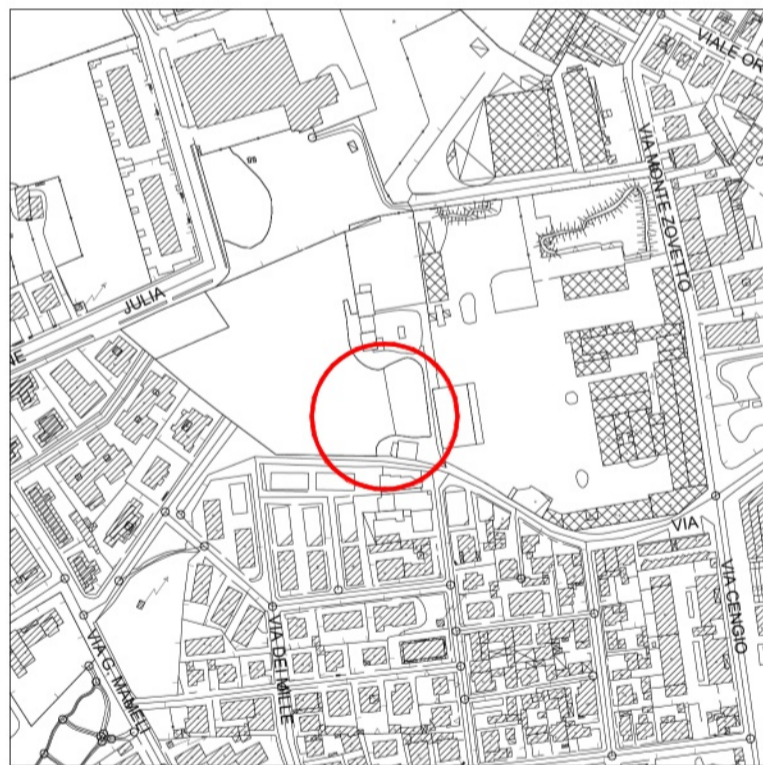


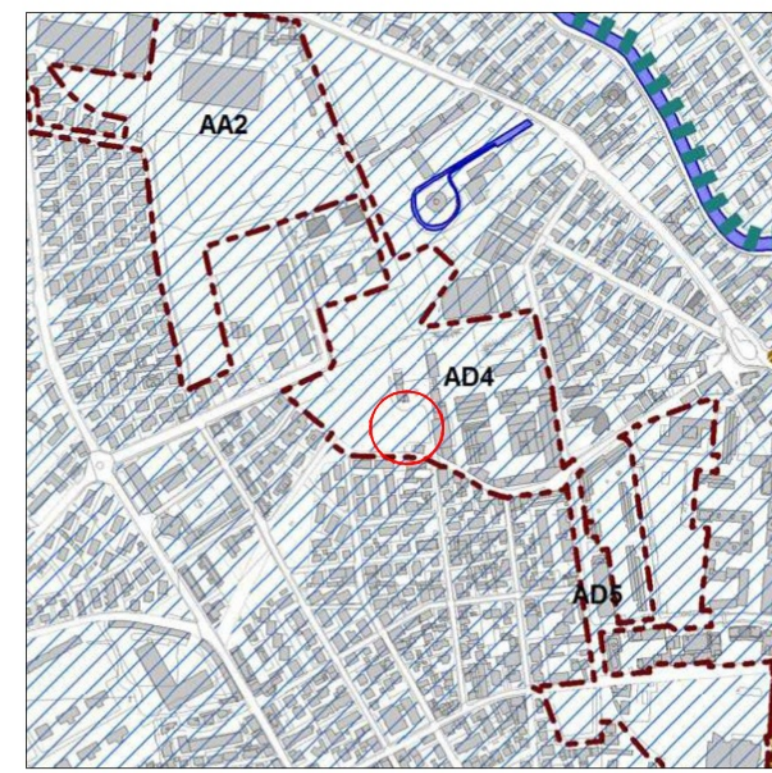
ESTRATTO MAPPA CATASTALE
 scala 1:2.000
 Comune di Vicenza (VI)
 Foglio 64
 Particelle: 2164, 342, 2348, 2199, 2163, 117, 293
 Ambito P.U.A. del P.I.



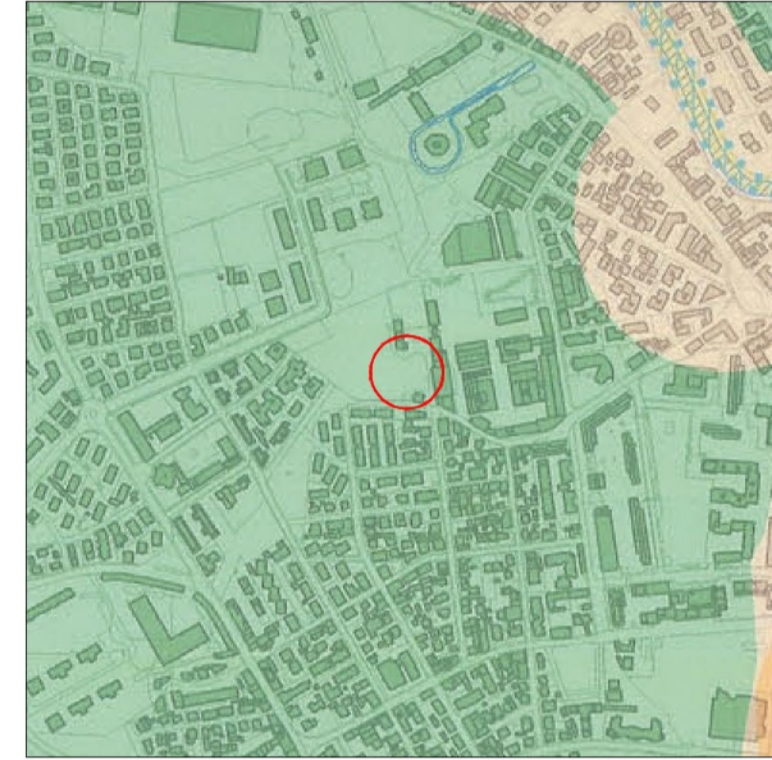
ORTOFOTO



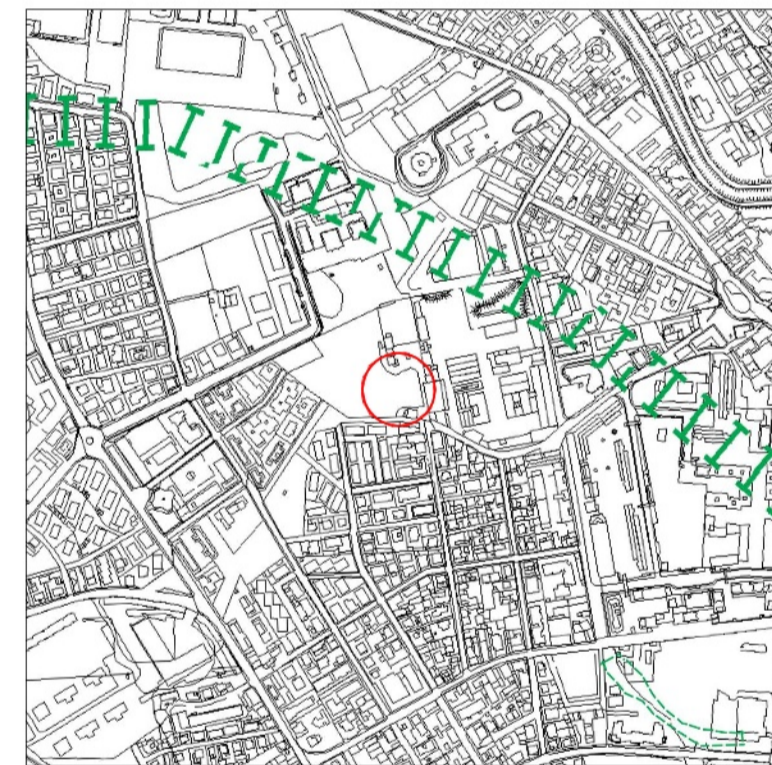
ESTRATTO CTR
 scala 1:5.000



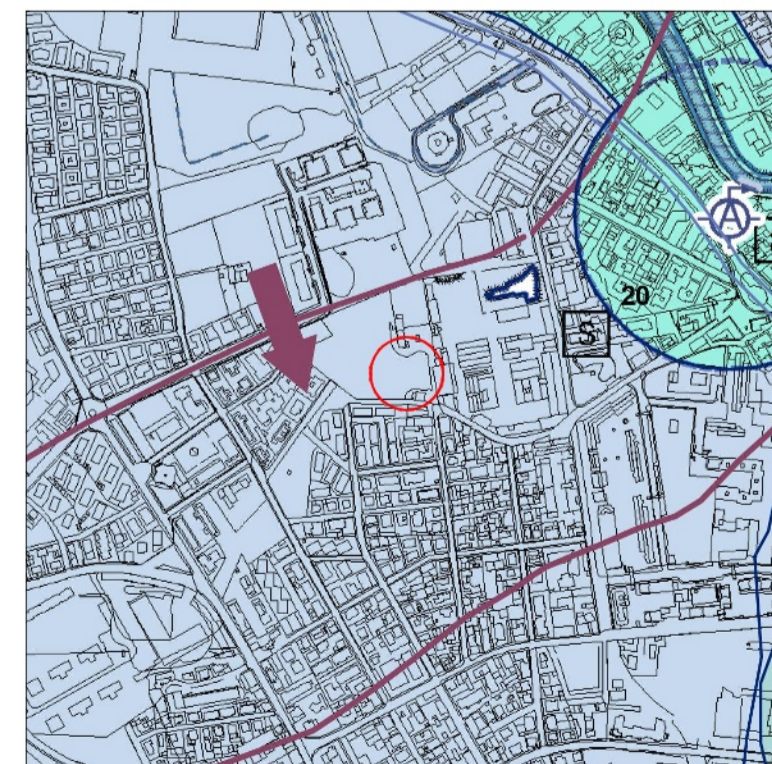
ESTRATTO PAT
 Elaborato 4: Carta delle trasformabilità
 scala 1:10.000



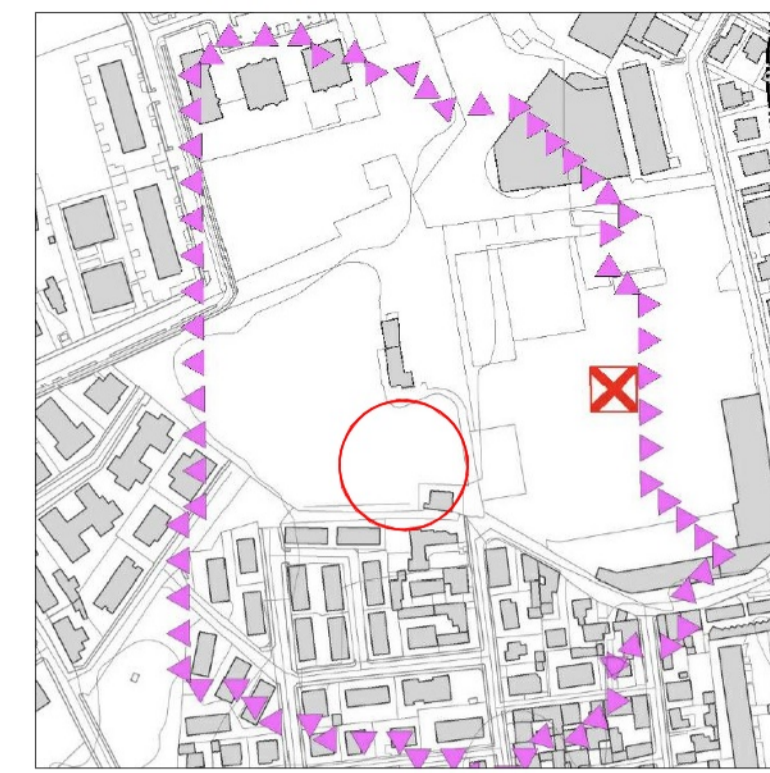
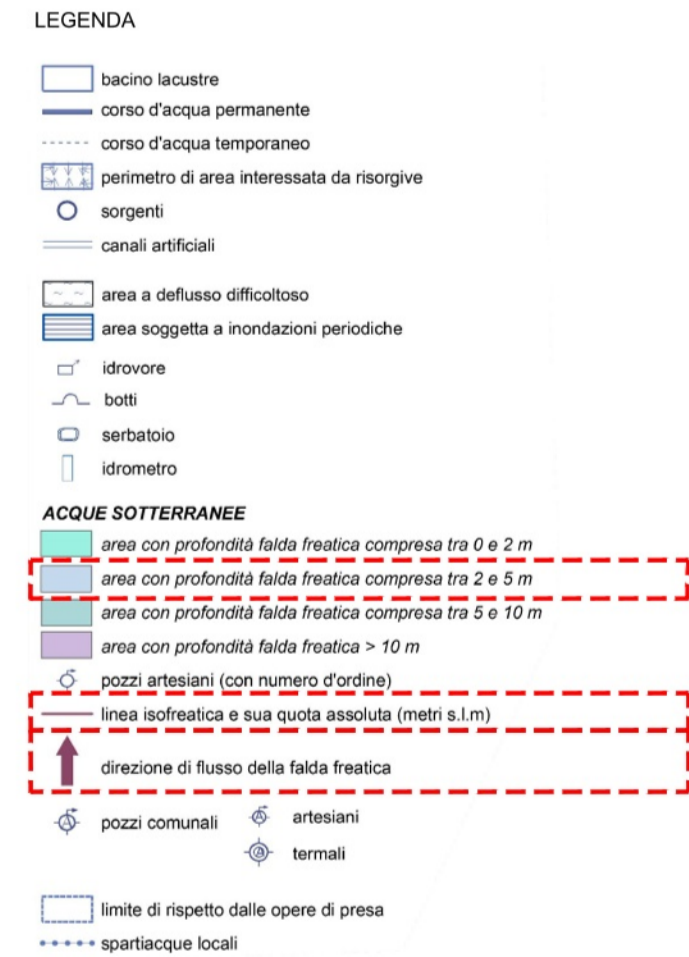
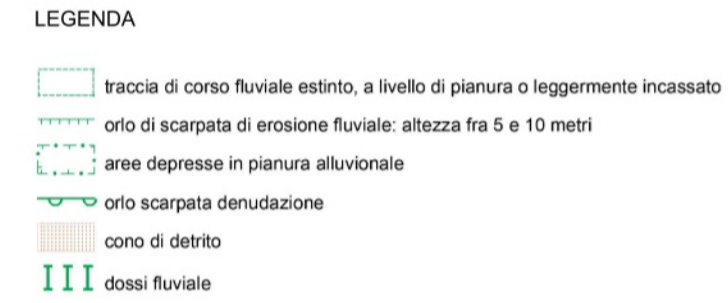
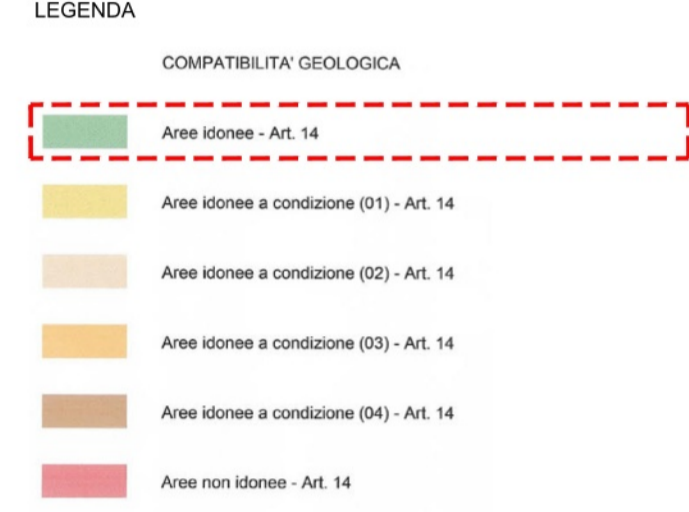
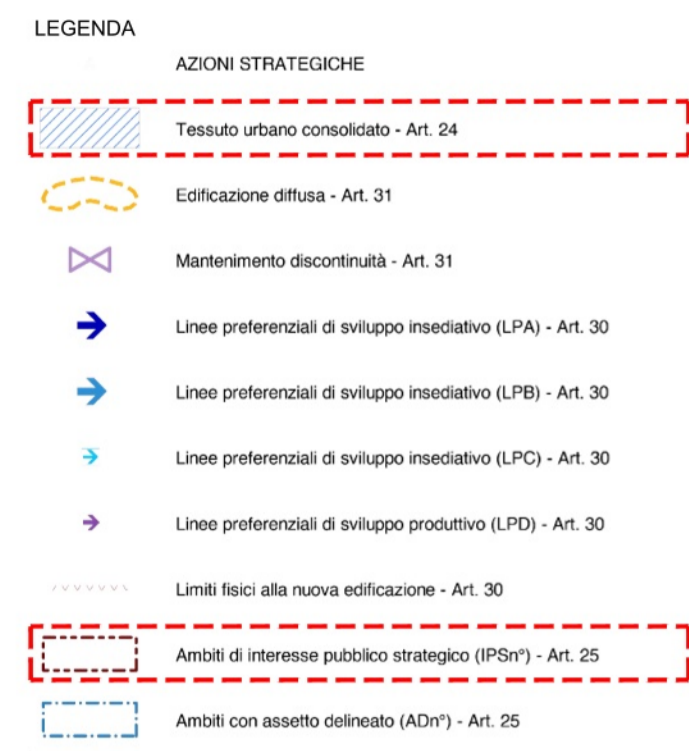
ESTRATTO PAT
 Elaborato 3: Carta delle fragilità
 scala 1:10.000



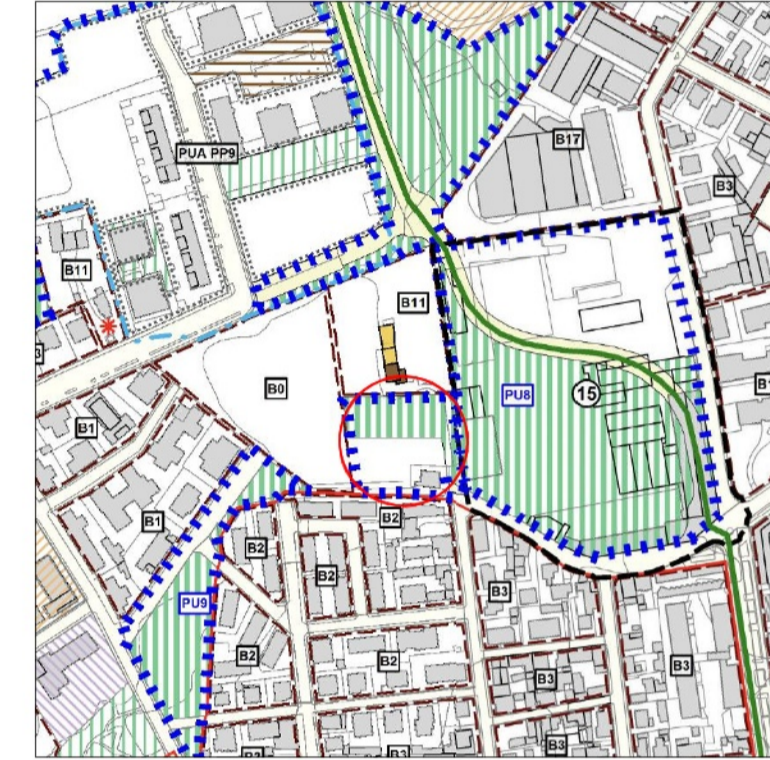
ESTRATTO PAT
 Elaborato A: Carta geomorfologica
 scala 1:10.000



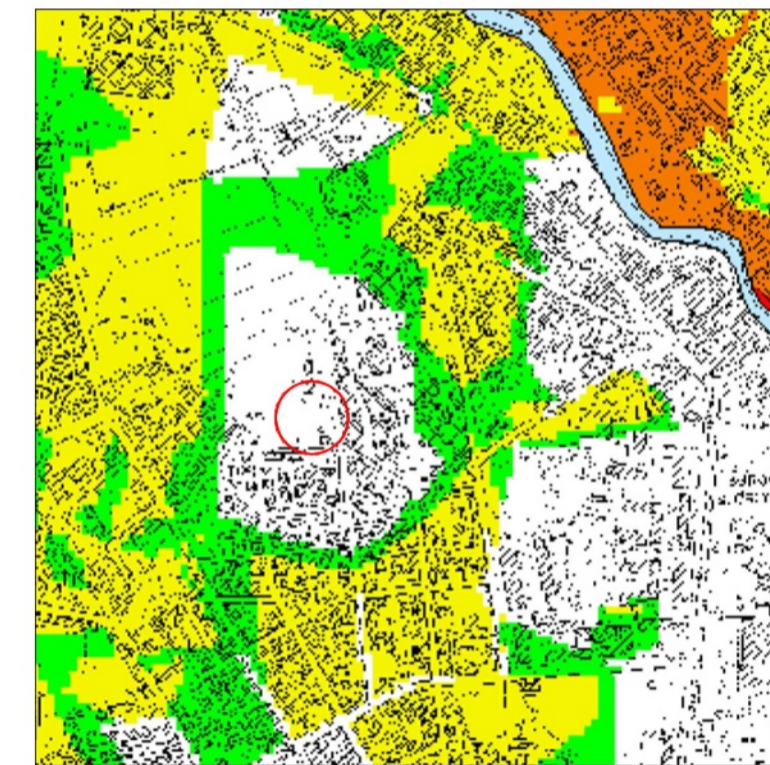
ESTRATTO PAT
 Elaborato A: Carta idrogeologica
 scala 1:10.000



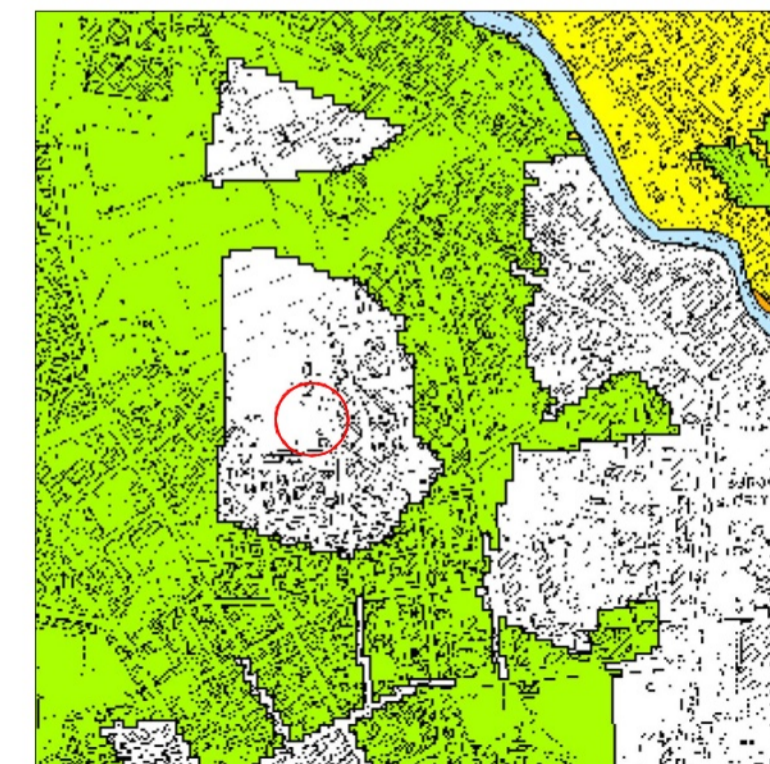
ESTRATTO Piano degli Interventi - PI
 Elaborato 2: Vincoli e tutele - Foglio 5
 scala 1:5.000



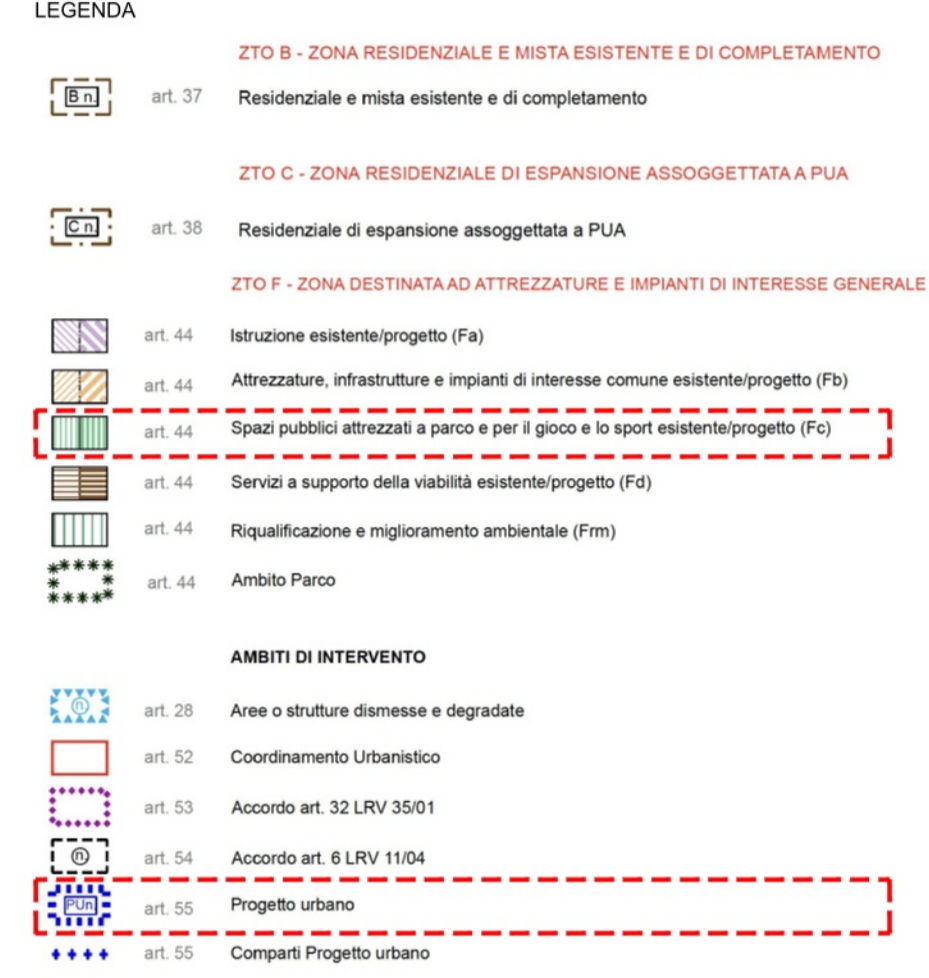
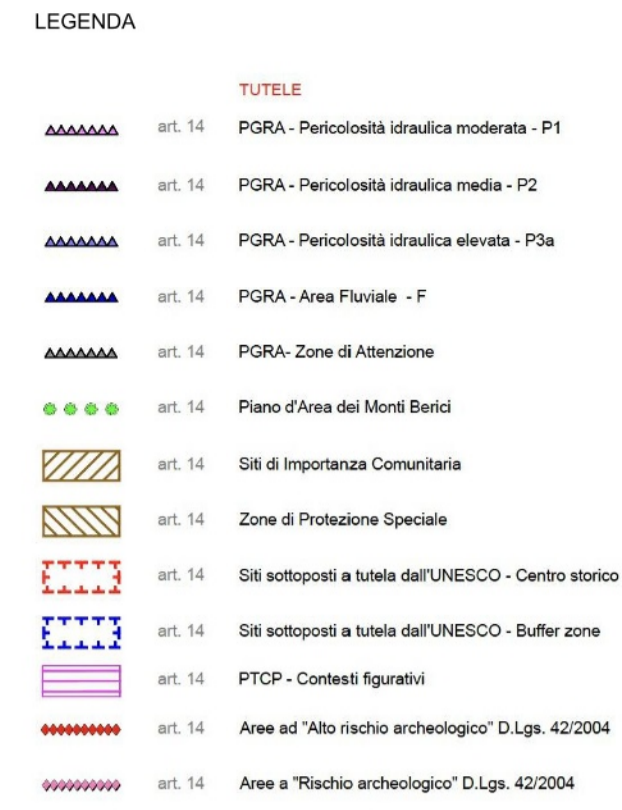
ESTRATTO Piano degli Interventi - PI
 Elaborato 3: Zonizzazione - Foglio 5
 scala 1:5.000



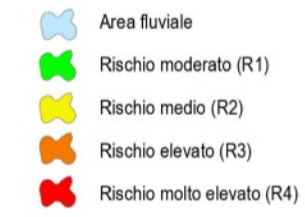
ESTRATTO PGRA
 Riquadro AE17: Carta del rischio idraulico
 scala 1:5.000



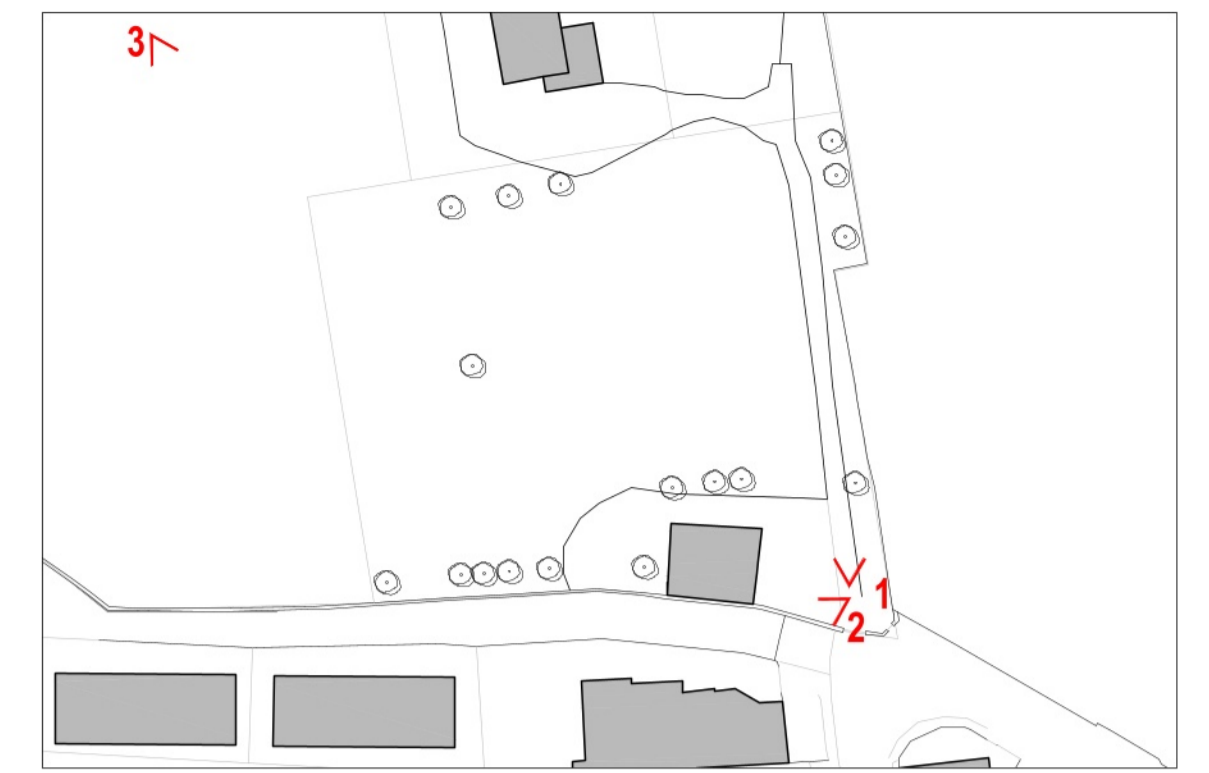
ESTRATTO PGRA
 Riquadro AE17: Carta della pericolosità idraulica
 scala 1:10.000



Classi di rischio idraulico



Classi di pericolosità idraulica



DOCUMENTAZIONE FOTOGRAFICA
 Navigatore



FOTO N.1



FOTO N.2



FOTO N.3

COMUNE	VICENZA	PROVINCIA	VICENZA	PROGETTISTA	ONO Architettura Arch. Antonio Galdeman Iscritto all'Ordine degli Architetti di Vicenza al numero 2441 Procuratore della pratica Firmato digitalmente
PROGETTO	PU8 DUE TORRI				
TAVOLA	INQUADRAMENTO (MAPPA CATASTALE, ORTOFOTO, CTR, PAT, PI, PGRA, DOC. FOTOGRAFICA)				
COMMITTENTE	QUERENA srl				
SCALA	scale varie	TAVOLA N.	01	DATA	Luglio 2024